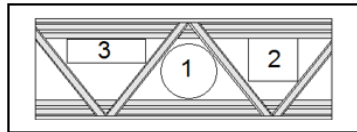
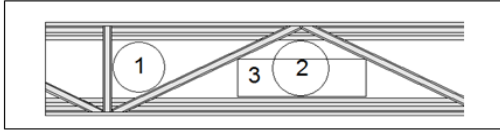


MEP Application

A big advantage to Ultra-Span floor trusses is the available area with the truss for MEP. Typical duct sizes that can be run through the floor trusses are:



Truss Depth	Duct 1	Duct 2	Duct 3
12"	na	na	6"x8"
14"	4"	6"	8"x8"
16"	6"	8"	16"x8"
18"	8"	10"	18"x8", 12"x10"
20"	10"	12"	22"x8", 20"x10"
22"	12"	14"	28"x8", 16"x12"
24"	14"	16"	32"x8", 24"x10"

Truss Depth	Duct 1	Duct 2	Duct 3
12"	na	na	n/a
14"	4"	6"x6"	8"x4"
16"	6"	6"x6"	12"x4", 8"x6"
18"	8"	8"x8"	12"x6"
20"	10"	8"x8"	12"x8"
22"	12"	10"x10"	16"x6", 12"x10"
24"	14"	12"x12"	20"x6", 16"x8"