

BXUV - Fire Resistance Ratings - ANSI/UL 263 Certified for United States
BXUV7 - Fire Resistance Ratings - CAN/ULC-S101 Certified for Canada

[See General Information for Fire-resistance Ratings - ANSI/UL 263 Certified for United States](#)

[Design Criteria and Allowable Variances](#)

[See General Information for Fire Resistance Ratings - CAN/ULC-S101 Certified for Canada](#)

[Design Criteria and Allowable Variances](#)

Design No. P577

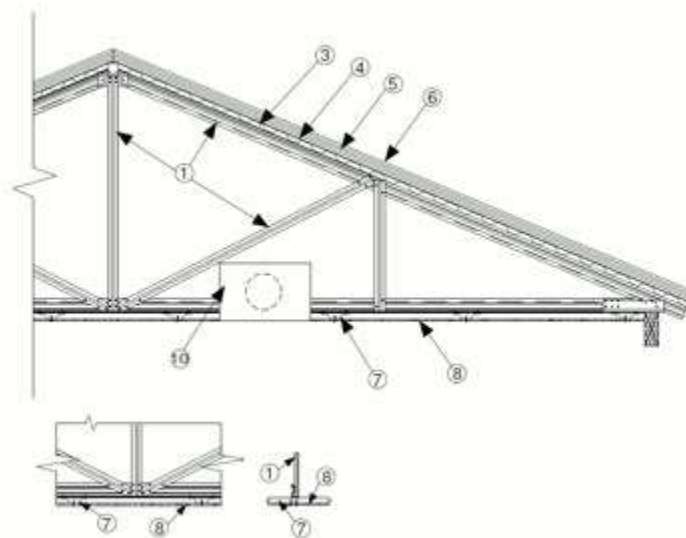
June 07, 2018

Restrained Assembly Rating - 1 Hr

Unrestrained Assembly Rating - 1 Hr

This design was evaluated using a load design method other than the Limit States Design Method (e.g., Working Stress Design Method). For jurisdictions employing the Limit States Design Method, such as Canada, a load restriction factor shall be used — See Guide [BXUV](#) or [BXUV7](#)

*** Indicates such products shall bear the UL or cUL Certification Mark for jurisdictions employing the UL or cUL Certification (such as Canada), respectively.**



1. Structural Steel Members* — Pre-fabricated light gauge steel truss system consisting of cold-formed, galvanized steel chord and web sections. Trusses fabricated in various sizes, depths, and from various steel thickness. Trusses spaced a max of 48 in. OC. Minimum depth is 18 in.

AEGIS METAL FRAMING, DIV OF MITEK — Ultra-Span, Pre-fabricated Light Gauge Steel Truss System

2. **Bridging** — (Not Shown) — Location of lateral bracing for truss chord and web sections to be specified on truss engineering.

3. **Steel Floor and Form Units** — (Classified or Unclassified) — Corrugated or fluted steel form units, min 22 MSG painted or galv steel, welded or mechanically fastened max 12 in. OC to truss-top chords.

4. **Gypsum Board*** — Min 1/2 in. thick, applied perpendicular to steel roof deck. End joints to occur over crests of steel roof deck. Sheathing loosely laid, adhered or mechanically attached to steel roof deck.

UNITED STATES GYPSUM CO — Type C

5. **Roof Insulation — Foamed Plastic*** — Any polyisocyanurate foamed plastic insulation boards bearing the UL Classification Marking. Min thickness is 0 in. for, with no limit on max overall thickness. Boards installed over the gypsum boards (Item 4), with the end-joints staggered in adjacent rows. When applied in more than one layer, each layer of board to be offset from layer below in order to lap all joints. Boards loosely laid, adhered or mechanically fastened to structural. See Foamed Plastic (CCVW) Category in the Fire Resistance Directory.

6. **Roofing Membrane*** — Single-ply membrane that is either ballasted, adhered or mechanically attached to the insulation(s) described herein as permitted under the respective company's Classification. See Fire Resistance Directory, Roofing Membranes (CHCI) category.

7. **Furring Channels** — Hat channels min 25 MSG galv steel, min 2-5/8 in. wide by min 7/8 in. deep, installed perpendicular to the trusses (Item 1), spaced a max of 16 in. OC, except at gypsum board end joints. At end joints, two courses of channel positioned 6 in. OC, 3 in. on each side of gypsum board end joints. Channel splices overlapped 4 in. beneath steel trusses. Channels secured to each truss with No. 18 SWG steel wire double strand saddle ties.

8. **Gypsum Board*** — One layer of nom 5/8 in. thick by 48 in. wide boards, installed with long dimension parallel to trusses. Attached to the furring channels using 1 in. long Type S bugle-head screws spaced 8 in. OC along butted end-joints and 8 in. OC in the field.

UNITED STATES GYPSUM CO — Type C

9. **Finishing System** — (Not Shown) — Vinyl, dry of premixed joint compound, applied in two coats to joints and screw heads, paper tape, 2 in. wide, embedded in first layer of compound over all joints.

10. **Ceiling Damper*** — (Optional) - Max nom area shall be 224 sq in. with the length not to exceed 16 in. and the width not to exceed 14 in. Max height of damper shall be 14 in. Aggregate damper openings shall not exceed 89 sq in. per 100 sq ft of ceiling area. Damper installed in accordance with the manufacturers installation instructions provided with the damper. A steel grille (Item 12) shall be installed in accordance with installation instructions.

POTTORFF — Model CFD-521-ST

11. **Air Duct*** — (Not Shown) - Any UL Class 0 or Class 1 flexible air duct installed in accordance with the instructions provided by the damper manufacturer.

12. **Grille** — (Not Shown) - Steel grille, installed in accordance with the installation instructions provided with the ceiling damper.

*** Indicates such products shall bear the UL or cUL Certification Mark for jurisdictions employing the UL or cUL Certification (such as Canada), respectively.**

Last Updated on 2018-06-07

Reprinted from the Online Certifications Directory with permission from UL

© 2018 UL LLC